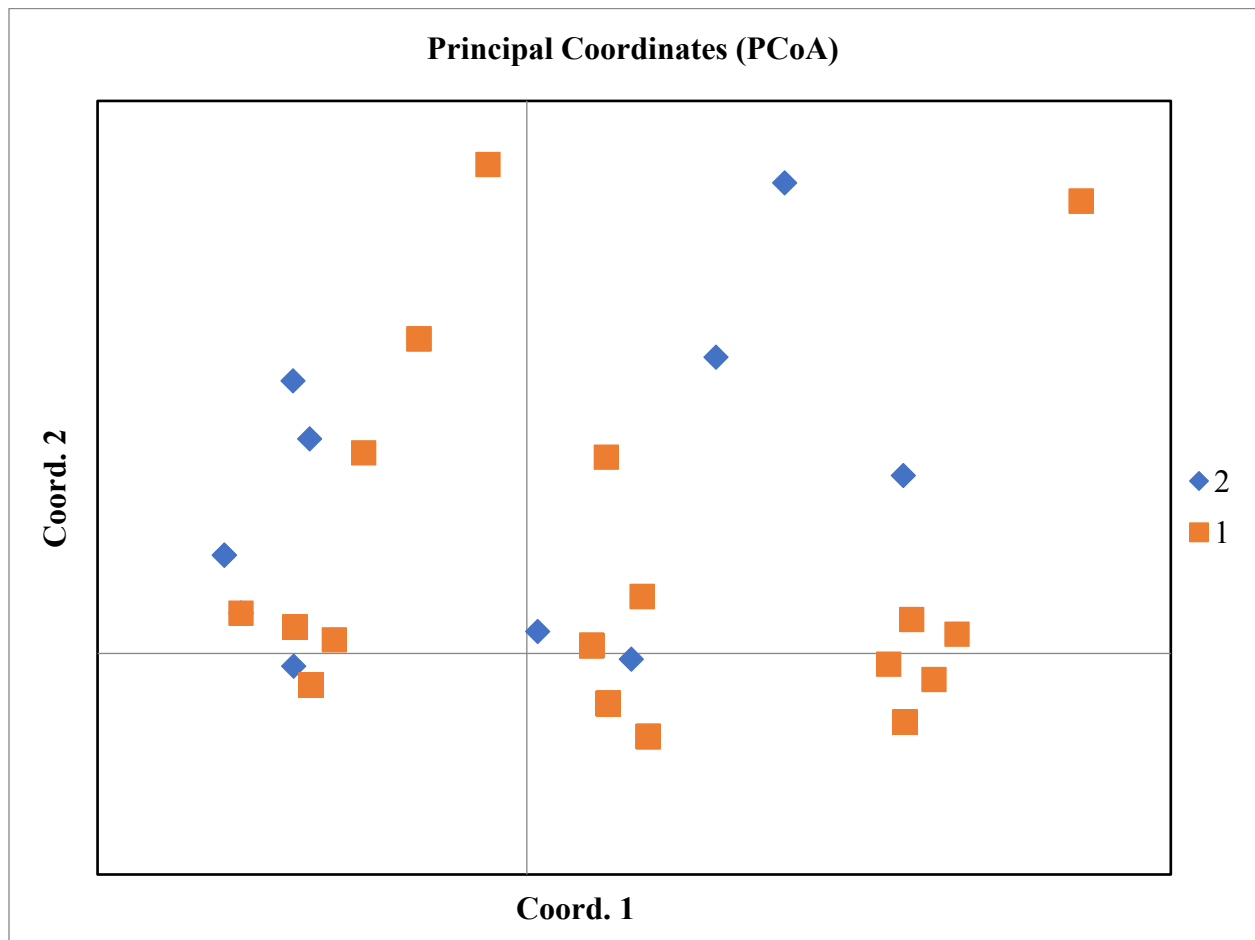


13 **Supplementary Figure 2.** Principal Coordinates Analyses of Bayantsagaan sheep (n=152) in Mongolia
14 based on the 3 candidate genes' SNP loci. The control group (1) is shown in orange, and the experimental
15 extra vertebrate group (2) is shown in blue. Each dot represents several samples that have similar genetic
16 variations. There is no indication of population structure based on the 3 candidate genes data.



17

18